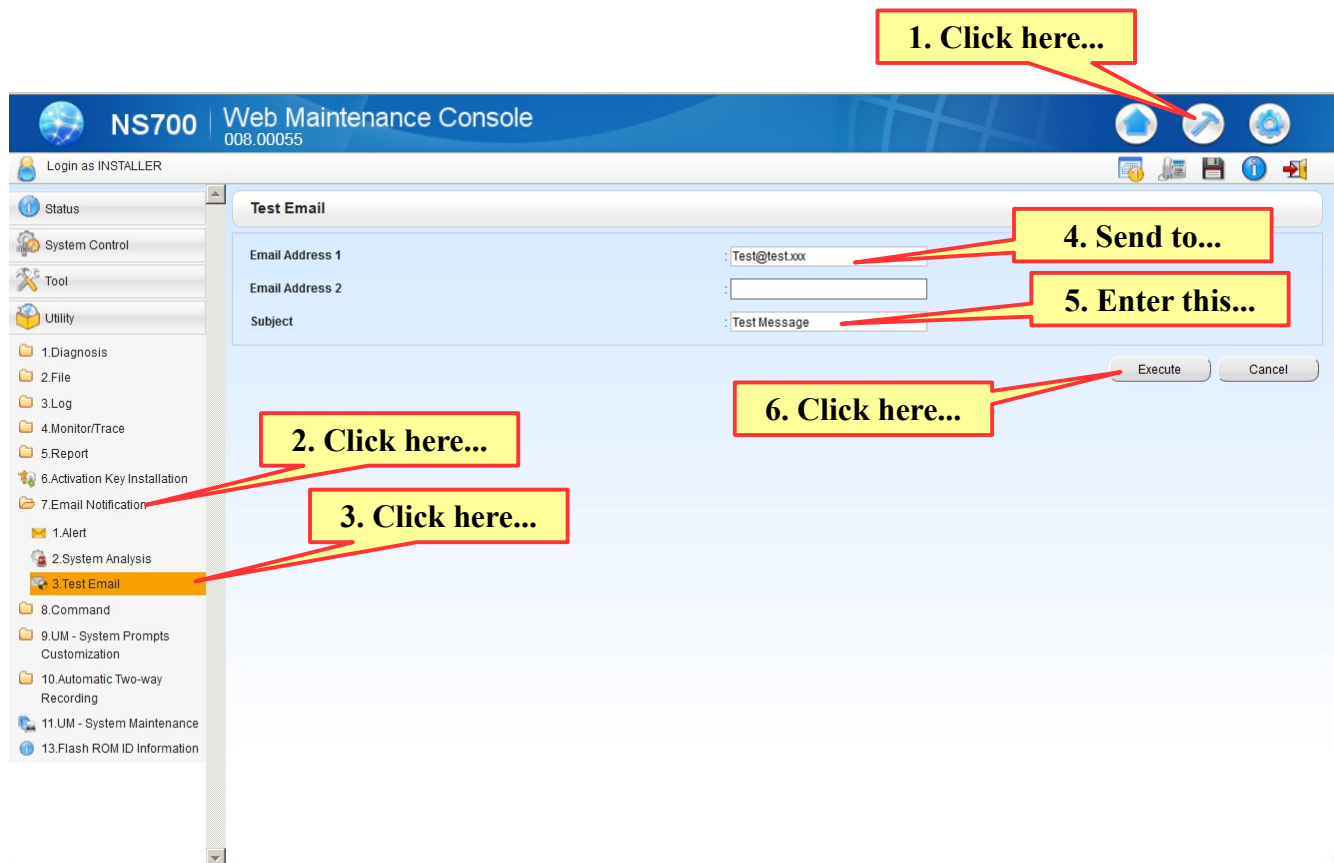


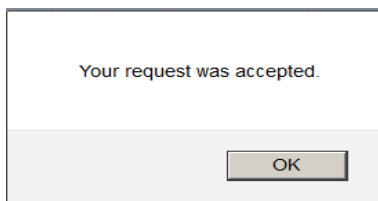
Panasonic NS-700 Email Test Telquest Tech Support

Before you can test the email, you need to set up the account in the KSU.

This is covered in a different Help Sheet.



This pop up will appear



**It does NOT mean that your Email was sent out.
It just means that the KSU accepted your request to send it.**

Page 2

If everything was set correctly in your Email Account in the KSU, you should receive an Email.

If you do not receive the test Email, then check your settings for the Email account in the KSU.

The usual error is the email password.